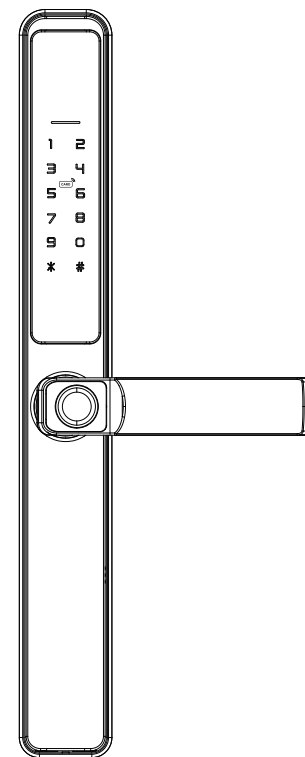


# Smart Lock



## User manual



IC card



Password



Mechanical key



**APP**



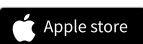
Fingerprint

\* To connect to the Internet, must purchase the version with Tuya WiFi function

Scan the QR code below to download the APP

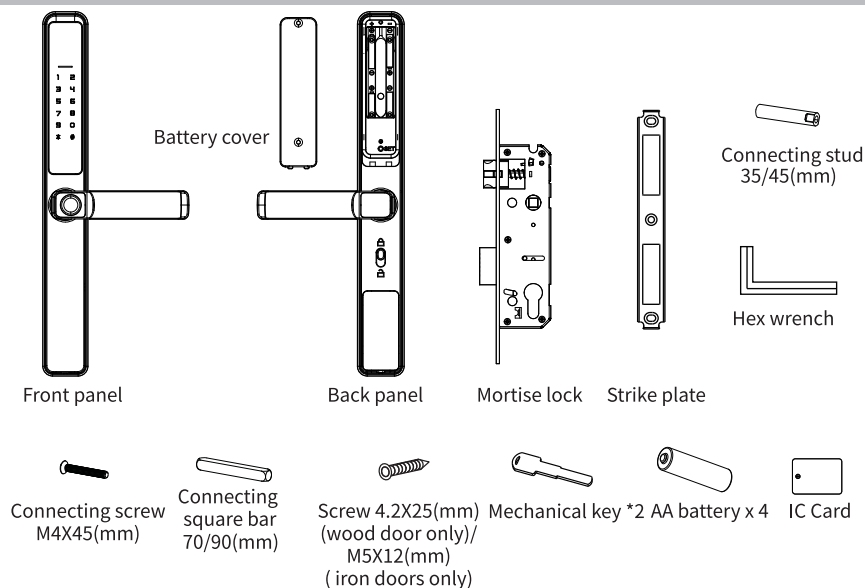


Application market

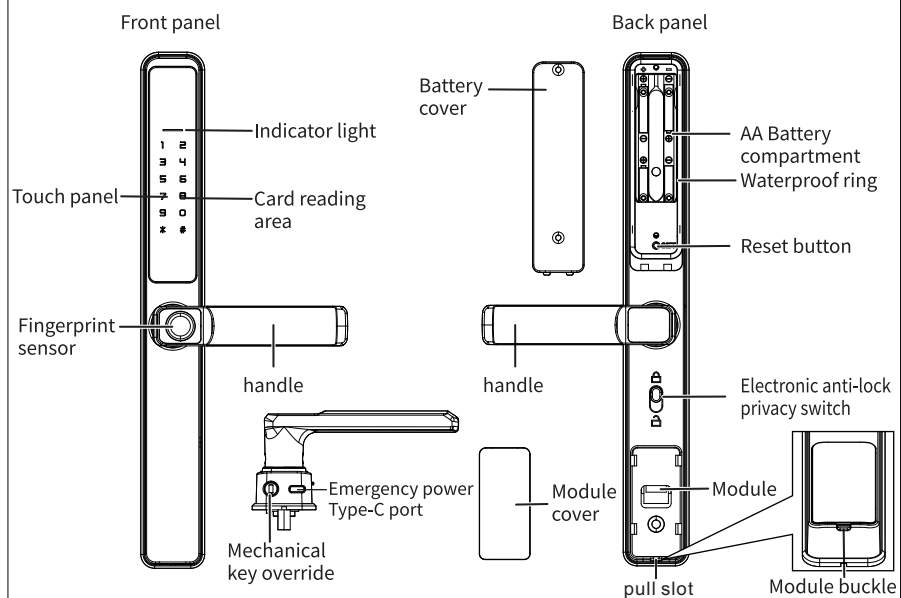


Search on the mobile app market or the Apple Store  
"Tuya Smart" or "Smart Life"

## Accessories



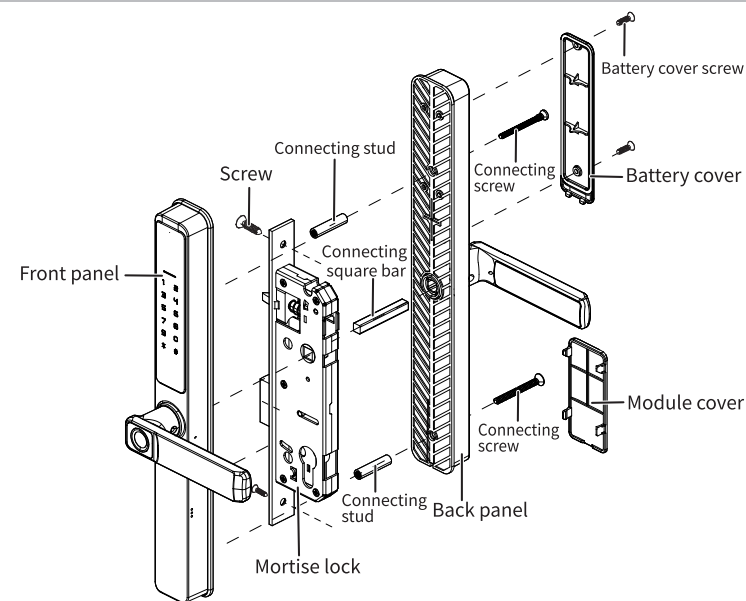
## Product overview



## Specification

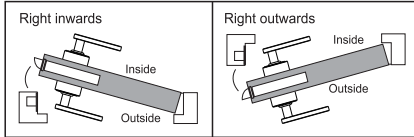
Material	Aluminum alloy, ABS, glass
Color	Black/silvery
Door thickness	35-70mm
Correspondence	WIFI
Support system	iOS 7.0 or above, Android 4.4 or above
Battery life	(10-12 months) Press 10 times/day to unlock normally
Power support	DC6V: 4 AA alkaline batteries
Static current	$\leq 50$ uA
Dynamic current	<200mA
Unlocking mode	Fingerprint, IC card, password, APP, mechanical key
Unlocking time	1~1.5 S
Working temperature	-20~50°C
Working humidity	10%~95%
Factory default password	Factory default password :123456. This password is invalid after you reset the administrator.
Lock type	2085/2585/2885/3585/4585/5085/6085/7085/3592/5572/6072
Virtual password	Available
Number of users	IC card + password + fingerprint : 300 groups, 9 groups of administrators

## Installation guide

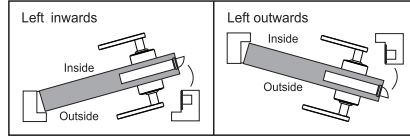


## Door opening direction selection

### 1. Right handle opening

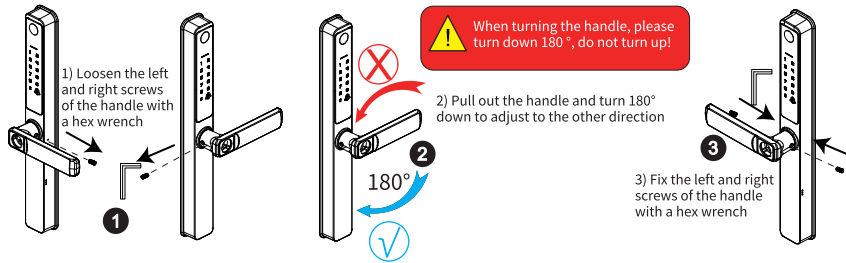


### 2. Left handle opening

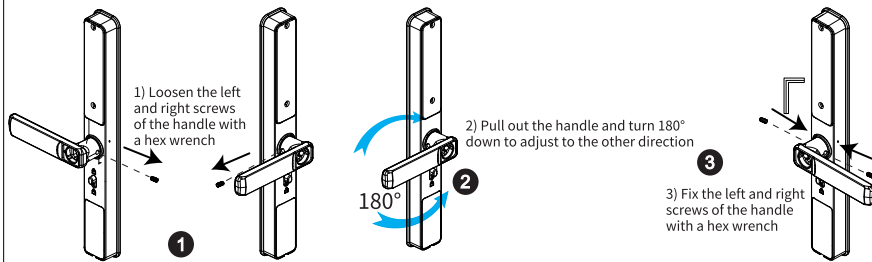


## Adjust Right Handle and Left Handle

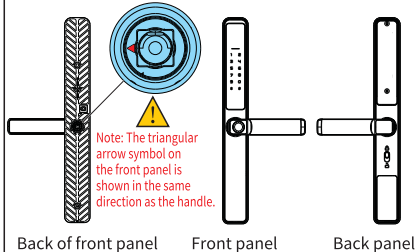
### 1. Adjust the front panel handles left or right



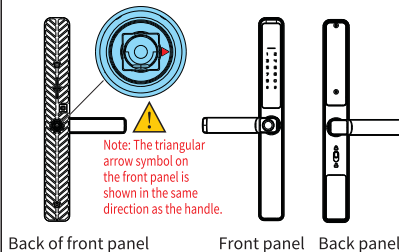
### 2. Adjust the back panel handles left or right



#### Open to the right:



#### Open to the left:

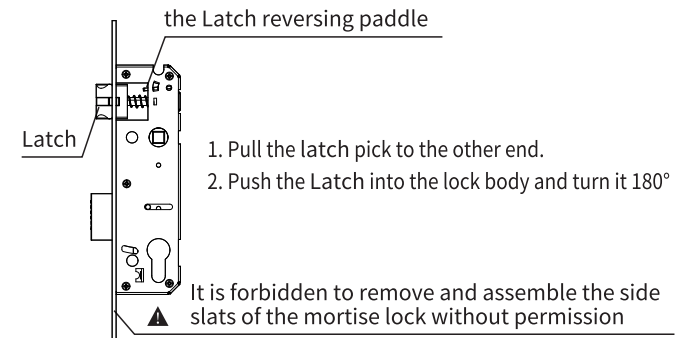


## Door thick accessories selection

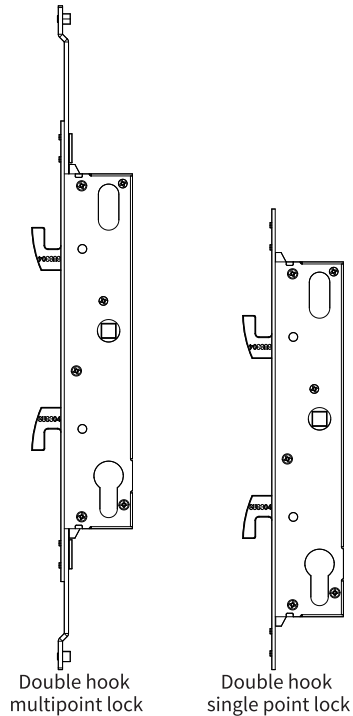
Applicable door thickness 35-70mm, beyond the range of doors require special customization. After determining the thickness of your door, select the appropriate accessories in the corresponding door thickness section

Accessories	Specification(mm)	Door thickness section detail and quantity	
		35-50(mm)	50-70(mm)
Square axis 70/90(mm)	50	1	
	70	1	
	90		1
Connecting stud 35/45(mm)	35	2	
	45	2	2
Screw M5X25(mm)	25	1	
	30	1	
Screw M5X30(mm)	30	1	
	45	2	1
Screw M5X45(mm)	45	2	1
	50		1
Screw M5X50(mm)	50		1
	25	5	5
Screw 4.2X25(mm) (For wooden doors)	25	5	5
Screw M5X12(mm) (for iron doors)	12	5	5

## Double deadbolt mortise lock internal and external conversion

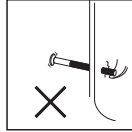


## The sliding door can be equipped with double hook mortise lock



## Precautions before installation

- 1) Do not use too much force during installation to avoid damaging the door lock.



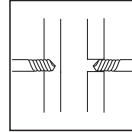
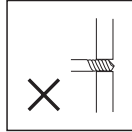
- 2) Wear glasses when drilling to protect your eyes.



- 3) Use the correct installation tools.



- 4) Drill holes on both sides of the door to avoid damaging the door panel.



## Information and Safety Warnings:

### 1. introduce

This user manual will introduce the functions and usage of this smart lock. It is important that you follow the instructions and note all comments that appear in this manual.

Please refer to this manual before attempting to use this lock. If you have any questions not answered in this manual or require unconventional service, please call our customer service line or send us a FAQ.

### 2. Safety warning:

- ⚠ When reading this manual, pay attention to the following notes. Notes must be read and followed to prevent injury or damage to the lock.

#### ⚠ Common usage:

- \* This lock can only be used in the manner described in this manual.
- \* All parts of the inspection lock are included. If any parts are missing, please contact our service staff.
- \* There is a protective film on the front touch screen. If there is a scratch on the protective film, please remove the protective film when necessary.
- \* Please use 4 AA batteries. Do not mix old and new batteries or other zinc-manganese batteries. As described in this manual, do not leave batteries outside items are inserted into the lock.
- \* Before starting installation, please ensure that all surfaces are flat, mounted on the door or have any type of defects such as gaps or warping. The lock may fail or become completely inoperable.
- \* Do not apply any detergent directly to any part of the lock. When cleaning, only use clean water or mild cleaner in soft non-grind clean on the cloth.
- \* Locks must be used with the Tuya APP. The lock works without an APP, but only when using an app can realize the complete function.

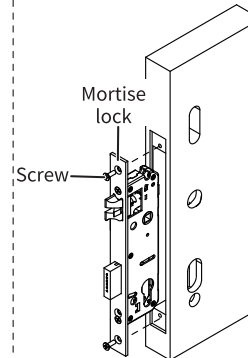
## Information and Safety Warnings:

### 3. Terms of Sale and Service

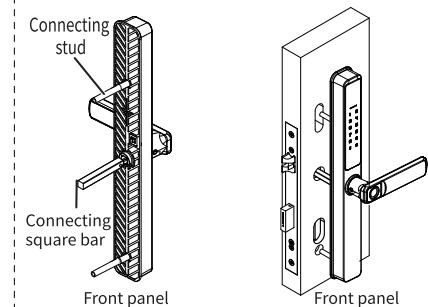
- \* Please read the instructions carefully before use!
- \* 1 year electronic warranty.
- \* This product comes with a 1-year limited warranty on electronic parts. Limited warranty on mechanical and surface quality against defects in materials and workmanship under normal use. Proof of purchase and ownership is required for the warranty to take effect.
- \* Please feel free to contact us for any errors or problems in our manual or after sale terms.
- \* We are not responsible for compensation or free maintenance for damage caused by human factors or unavoidable causes. Please check our after-sales service terms.
- \* Non-technical personnel do not remove the lock at will. If necessary, please operate under the guidance of technical personnel.
- \* Note: The product picture may be slightly different from the actual product, please refer to the actual product.
- \* After replacing the battery, please do not discard it at will. Please return the battery to the recycling station to avoid environmental pollution!

## Installation steps

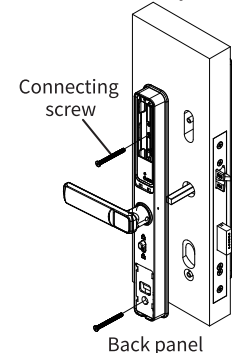
### 1. Install mortise lock



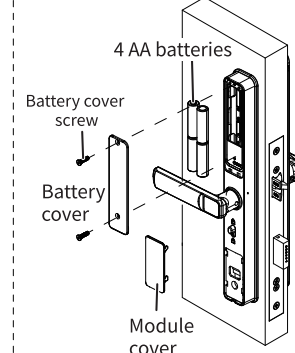
### 2. Install the front panel



### 3. Install the back panel

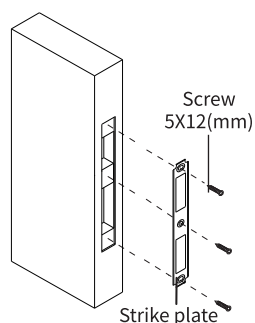


### 4. Install batteries



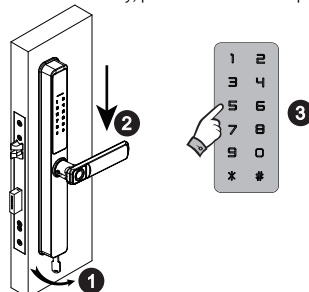
## Installation steps

### 5. Install Strike plate

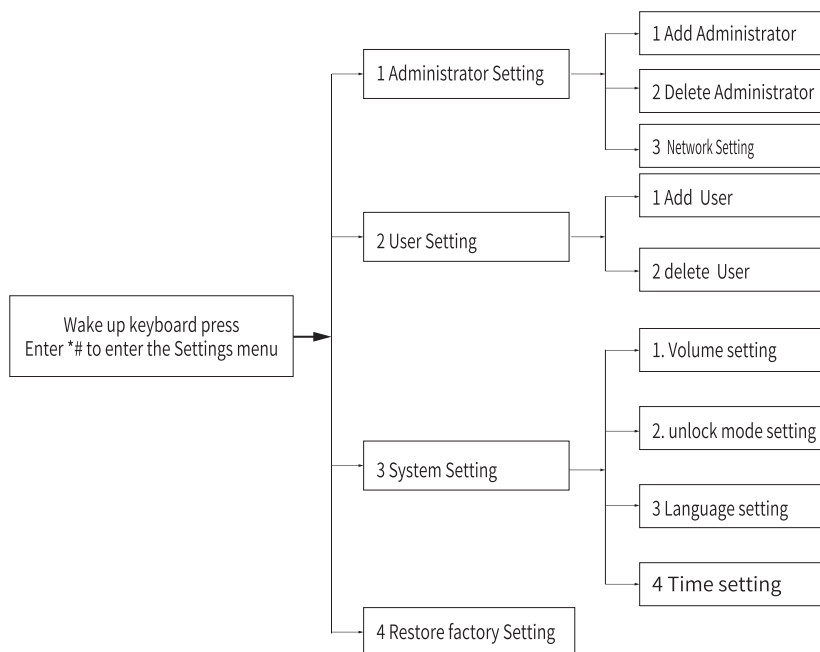


### 6. Test the lock and unlock it with a mechanical key

After installation, please test with code 123456, turn the manual key, press the handle to open.



## The menu structure is shown in the figure

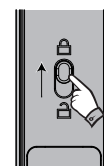


## Precautions before operating the smart lock

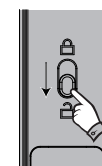
### 1. Unlock the privacy switch settings

By default: The default administrator password is 123456. You must change this password in order to set the network. You cannot set the smart lock through Tuya APP under the default password 123456 in the factory state, and the electronic lock button is also unlocked!

There is a privacy button on the back panel. You can pull up the button with the "lock" sound. Then locked inside, only the administrator can open the door other user password or IC card will be invalid. You can pull the button down again, accompanied by the sound "Unlock" to cancel this feature.



Push the button up to lock it



Push the button down to unlock it

Note: Push the button up to lock the state, push the button down to unlock the state.

### 2. Other precautions

- 1) The administrator can be a password/fingerprint or IC card, which you can set according to your own requirements. There are 9 administrators in total.
- 2) Press the # key to confirm and press \* to return to the previous step. If there is no operation within 10 seconds, the lock will exit the setting.
- 3) After 5 incorrect unlock, the keyboard will be locked for 30 seconds, during which time no operation will respond.
- 4) If you enter the wrong password for more than 5 consecutive times, the keyboard will be locked for 30 seconds. The system will not respond to any operation within 30 seconds.
- 5) Password anti-snooping function: enter the password as follows when opening the door :XXX password XXX; You can add some irrelevant codes before and after the password and press # to confirm. The password must be included in the input.
- 6) When the voltage is lower than 4.8V, it will automatically alarm every time you open the lock, and be sure to replace the new battery as soon as possible.
- 7) Hold down the "SET" key on the rear panel for 6 seconds (turn on the indicator 654321 at the same time) to restore the system to factory defaults. The initial management password is 123456.
- 8) In the factory state, input 333666999# can quickly switch between Chinese and English.
- 9) After unlocking, enter "5" + "#" successively, and the lock will enter the normal opening mode (this setting is valid for this time. Enter the unlocking information again and then close the lock.
- 10) After unlocking, press "\*" to play the current unlocking information number.
- 11) After opening the electronic locking function, only the administrator can open the lock; Privacy features.

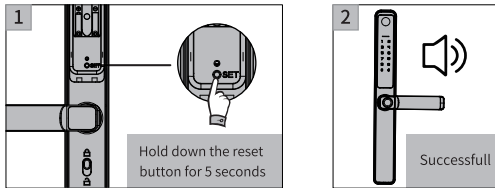
## Smart lock operation

### 1. Function key Description

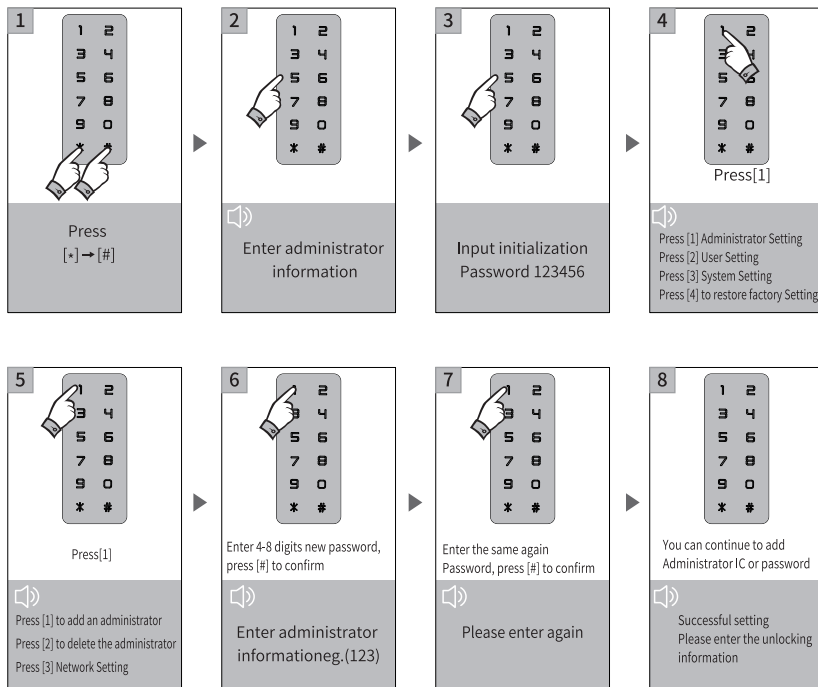
- 1) Administrator information: refers to the fingerprint, password or IC card of the administrator.
- 2) Unlocking information: refers to the input fingerprint password or IC card information (including administrators and ordinary users).
- 3) \* key: For Clear key or Back key, tap Clear the previous input when entering the password, and tap three times to clear the input.
- 4) "\*" key: confirm key or menu function key.

### 2. Initialization Settings

Please note: Before you can start using this lock, you must register a new administrator. If not, you cannot configure a Wi-Fi-enabled lock. The procedure is as follows:

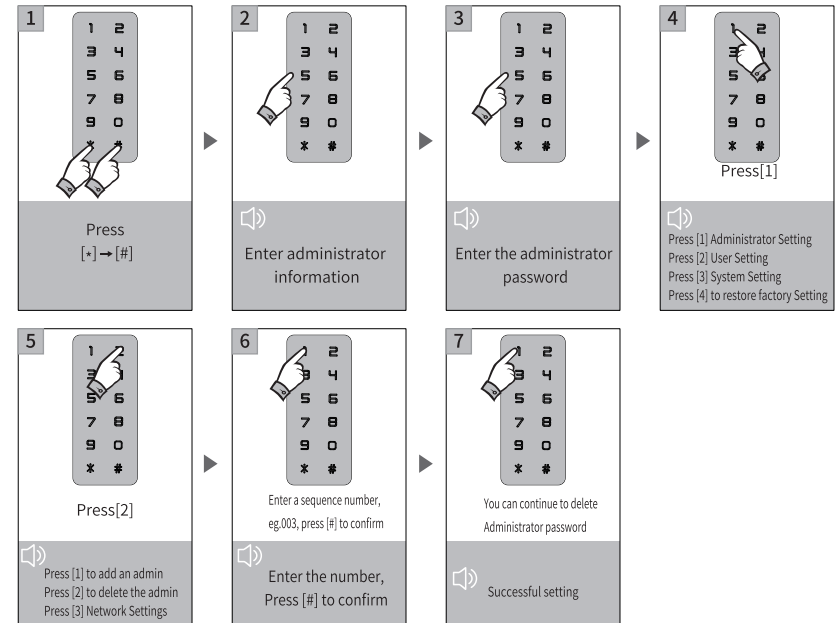


### 3. Add the administrator password

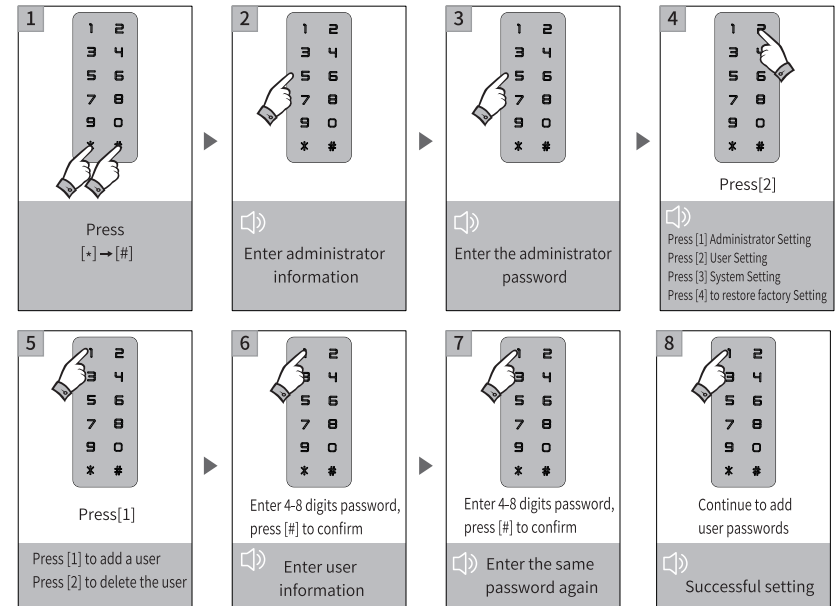


## Smart lock operation

### 4. Delete the administrator password



### 5. Add user password



## Smart lock operation

### 6. Delete the user password

- Press  
[\*] → [#]
- Enter administrator information
- Enter the administrator password
- Press[2]  
Press [1] Administrator Setting  
Press [2] User Setting  
Press [3] System Setting  
Press [4] to restore factory Setting
- Press[2]  
Press [1] to add a user  
Press [2] to delete the user
- Select [1] to delete a user  
Select [2] to delete all users
- Continue deleting user passwords  
The user number is successfully delete press [#] to confirm

### 7. Add user IC card

- Press  
[\*] → [#]
- Enter administrator information
- Enter the administrator password
- Press[2]  
Press [1] Administrator Setting  
Press [2] User Setting  
Press [3] System Setting  
Press [4] to restore factory Setting
- Press[1]  
Press [1] to add a user  
Press [2] to delete user
- Touch the IC card to the sensing area
- Successful setting

## Smart lock operation

### 8. Delete the IC card information

- Press  
[\*] → [#]
- Enter administrator information
- Enter the administrator password
- Press[2]  
Press [1] Administrator Setting  
Press [2] User Setting  
Press [3] System Setting  
Press [4] to restore factory Setting
- Press[2]  
Press [1] to add a user  
Press [2] to delete user
- Press [1] to delete a user  
Press [2] to delete all users
- Continue to delete the user IC card  
The user number is successfully delete press [#] to confirm

### 9. Add user fingerprint information

- Press  
[\*] → [#]
- Enter administrator information
- Enter the administrator password
- Press[2]  
Press [1] Administrator Setting  
Press [2] User Setting  
Press [3] System Setting  
Press [4] to restore factory Setting
- Press[1]  
Press [1] to add a user  
Press [2] to delete user
- Enter the fingerprint in the sensor fingerprint area 4 times  
Enter the unlocking information
- Continue to add other user fingerprints  
Successful setting

## Smart lock operation

### 10. Delete the user fingerprint

**1**

Press  
[\*] → [#]

**2**

Enter administrator information

**3**

Enter the administrator password

**4**

Press[2]  
Press [1] Administrator Setting  
Press [2] User Setting  
Press [3] System Setting  
Press [4] to restore factory Setting

**5**

Press[2]  
Press [1] to add a user  
Press [2] to delete user

**6**

Press [1] to delete a user  
Press [2] to delete all users

**7**

Enter the user number and press [#] to confirm  
Enter a user number, eg. 010

### 11. System setting

**1**

Press  
[\*] → [#]

**2**

Enter administrator information

**3**

Enter the administrator password

**4**

Press[3]  
Press [1] Administrator Setting  
Press [2] User Setting  
Press [3] System Setting  
Press [4] to restore factory Setting

## Smart lock operation

**5**

Press [1] Volume setting  
Press [2] unlock mode setting  
Press [3] Language setting  
Press [4] time setting

**6**

Press [1] to turn on or off the prompt tone.  
Press [2] to unlock a single key or a combination key  
Press [3] to select English or Chinese  
Press [4] to change the lock time

Note: You can follow the sound prompt to unlock type/language/lock time and other Settings, these features are designed for some special cases

### 12. Restore factory Settings

**1**

Press  
[\*] → [#]

**2**

Enter administrator information

**3**

Enter the administrator password

**4**

Press[4]  
Press [1] Administrator Setting  
Press [2] User Setting  
Press [3] System Setting  
Press [4] to restore factory Setting

**5**

Enter administrator information

**6**

Successful initialization



## Zigbee Configuration (Optional Tuya Zigbee)

- 1) Add an administrator (if added, skip it);
- 2) Search "Smart Life" in the App store or APP store to download the app and install it.
- 3) Register and log in with your mobile number.
- 4) Add a gateway according to the gateway operation instructions;
- 5) Press the "Smart Life" interface to find the security sensor, record the "Door lock Ziqbee", click and complete the device addition and use as prompted: (You can also add a door lock by adding a child device under the gateway interface)
- 6) Add a network:
  - a. Press \* + # to verify the administrator, press 1 to enter the administrator Settings, and press 3 to configure the network for voice broadcasting
  - b. Voice announcement: "Operation succeeded" when the addition is successful; Voice broadcast "Add failed" after timeout;
- 7) Remote unlocking: Enter the correct password on the door lock interface to confirm;

## Add remote control (optional)

- 1) Add an administrator (if added, please skip it):
- 2) Add remote press, please refer to add common users.
- 3) Press any button on the remote control to indicate successful operation

## Tuya APP operation (optional function)

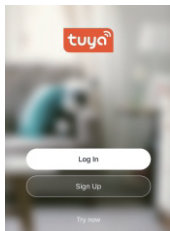
### 1. Download the Tuya APP

Please download Tuya Smart or Smart Life from the Apple Store or App Market,  
You can also scan the QR code on the right to download the APP directly.

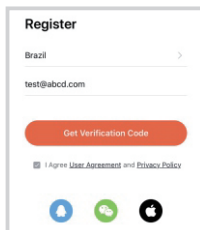


### 2. Register an account.

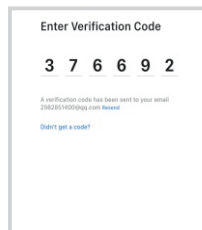
Please use your email or mobile phone number to register an account.



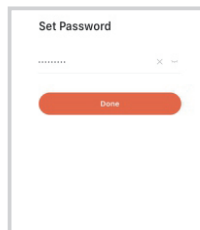
1) Sign up



2). Register with email or mobile phone number to get verification code



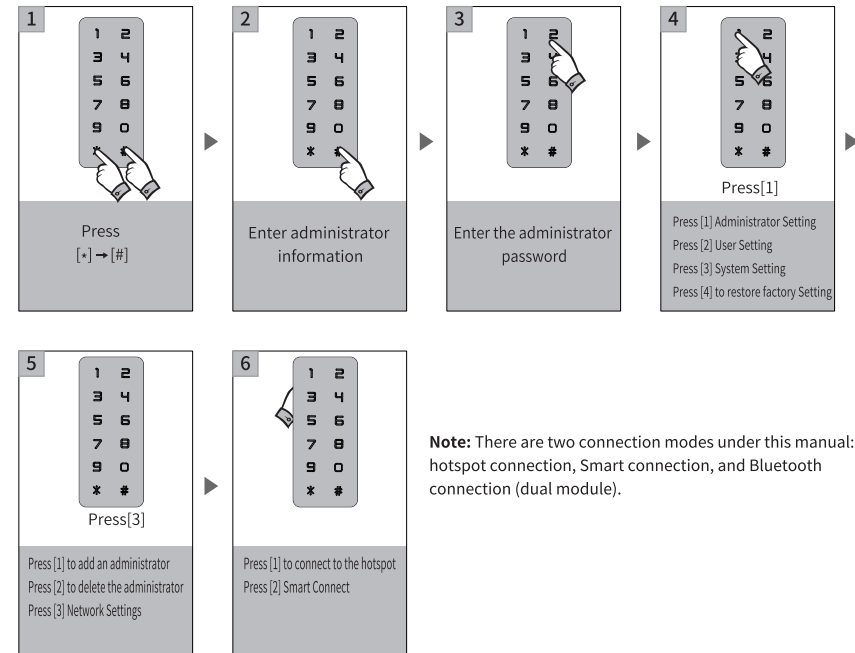
3). Fill in the verification code



4). Set the password to complete the registration

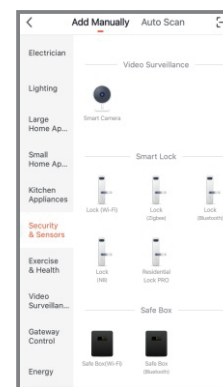
## Tuya APP operation (optional function)

### 3. Network Settings

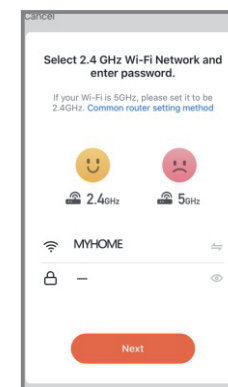


### 4. Intelligent Connection (EZ mode)

Please open the Tuya Smart APP and select WiFi lock under "Security and Sensors". Please ensure that the privacy button is unlocked. If it is locked, WiFi connection cannot be configured.



Step 1  
Select Lock (WiFi) under the "Security & Sensors" category

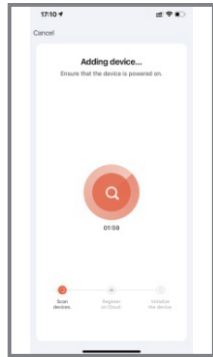


Step 2  
Enter the WiFi password and click Next.



Step 3  
Confirm the rapidly blinking number 5 and click Next.

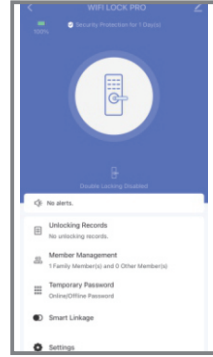
## Tuya APP operation (optional function)



Step 4  
Scanning equipment



Step 5  
Adding a device succeeds

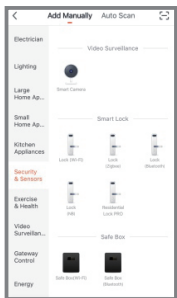


Step 6  
Interface to edit the name of the lock

### 5. Hotspot Connection (AP mode)

Please open the Tuya Smart APP and select wifi lock under "Security and Sensor".

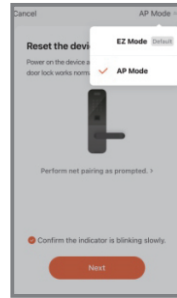
Please ensure that the privacy button is unlocked. If it is locked, wifi connection cannot be configured.



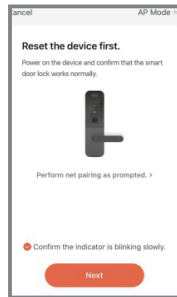
Step 1  
Select Lock (WiFi) under the "Security and Sensors" category



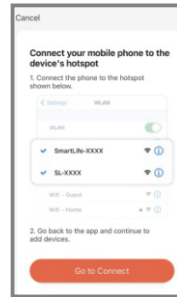
Step 2  
Enter wifi password and click Next.



Step 3  
In the upper right corner, select AP Mode.



Step 4  
Confirm the rapidly blinking number 5 and click Next.

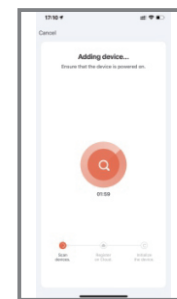


Step 5  
Connect to mobile hotspot, click "Go to Connection"



Step 6  
Find SmartLife-xxx and connect

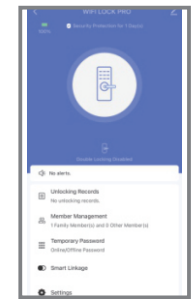
## Tuya APP operation (optional function)



Step 7  
Scanning equipment



Step 8  
Adding a device succeeds



Step 9  
You can edit the lock name

### 6. BLE Quick connection

This is an additional form of BLE connection. This operation should be performed in AP or EZ mode state (5 blinking).

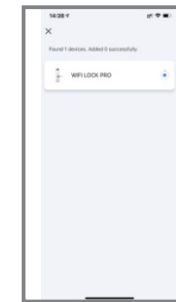
A window pops up as follows:



Step 1  
The window for adding a device is displayed



Step 2  
Enter the Wi-Fi password and click Next.



Step 3  
Place your phone near your router and lock it to the cloud



Step 4  
connection

### 7. Remote unlock function

When visitors press the numbers 9 and # in sequence, there is a remote unlock request in the App sent to the administrator as a photo, you can cancel the operation by pressing "agree to unlock" or "refuse to unlock".

