

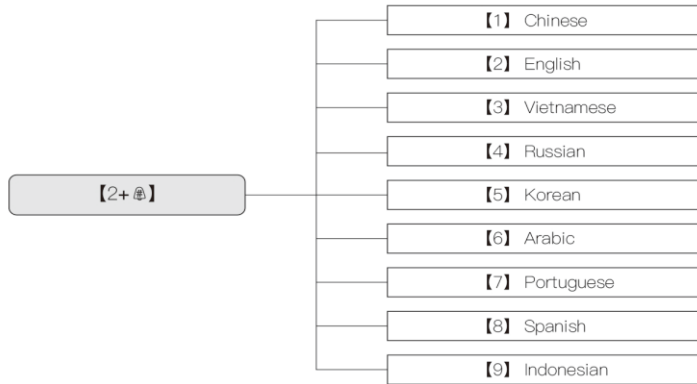
INSTRUCTION MANUAL



Before installing the smart lock, please read this manual carefully,
and keep it in a safe place, for future reference.

9、Initial Function

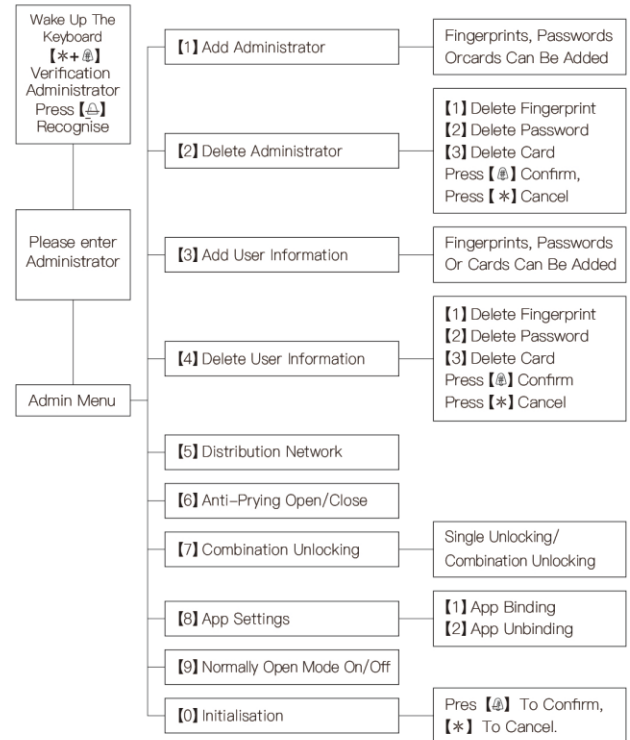
Language Selection



△ If you haven't register any administrators, then you can press **[2#]** and change the language you want. If you have register administrators, then the language can't be changed unless you reset it.

USE OF DOOR LOCKS

1、Menu Structure Diagram



If you haven't registered any administrators, then press ***#**, you can register the password, fingerprint or card you want directly. After registering administrators, you can press ***** to exit. You can press ***#** to enter the system to do more settings.

2、Add Administrator



(1) Enter your fingerprint, password or IC card information as required and the system will automatically assign a key serial number.

(2) The system default serial number of the first administrator is 001, and it can not be deleted. Maximum number of administrators and users you can register is 300 pieces. If you register 300 administrators, then you can't register any users.

(3) The valid number of digits of the numeric password is 6~10 digits.

- △ ◆ Fingerprint entry 5 times, PIN 2 times, IC Card 1 time.
- ◆ After successful entry, you can continue to enter other administrator information (press [*+Ⓜ] to return).



△ As shown in the figure, ensure that the 5 fingerprint areas are fully recorded and the recognition rate will be 99.9%!

- Use the center of the finger to enter, not the fingertip.
- Scanning the same fingerprint from multiple angles
- Multiple fingerprints can be scanned for the same user.
- Keep your fingers clean and not too dry or wet.

3、Delete Administrator



When you press [1], you will delete all fingerprints, press [2], delete all passwords, press [3], delete all cards. You can't delete only one of fingerprint, password or card.

△ The administrator password 001 cannot be deleted for it.

4、Add User Information



(1) Enter your fingerprint, password or IC card information as required and the system will automatically assign a key serial number.

(2) The valid number of digits of the numeric password is 6-10 digits.

- △ ◆ Fingerprint entry 5 times, PIN 2 times, IC Card 1 time.
- ◆ After successful entry, you can continue to enter other administrator information (press [*+Ⓜ] to return, the first message must be preceded by the entry of the administrator password).

5、Delete User Information



When you press **【1】** , you will delete all fingerprints, press **【2】** , delete all passwords, press **【3】** , delete all cards. You can't delete only one of fingerprint ,password or card.

6、Distribution Network



See P.21 [Add WiFi Door Lock] for details.

7、Anti-Prying Switch



The factory default anti-pry function is **【Off】** .

8、Combo Unlock



The factory default is **【Single Unlock】** .

9、App Settings



This is not available. Please press * for connection to WiFi in the App.

10、Normally Open Mode



The factory default normally open mode is **【Off】** .

11、Quick Operation

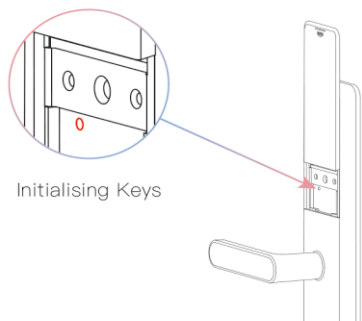
(1) **【*】** : Return/Cancel;

(2) **【Ⓜ】** : Confirmation/Entry/Doorbell.

12、Initialising The System



Open the battery cover, press and hold the initialisation key for 5 seconds and then press the [#] key to confirm the forced initialisation.

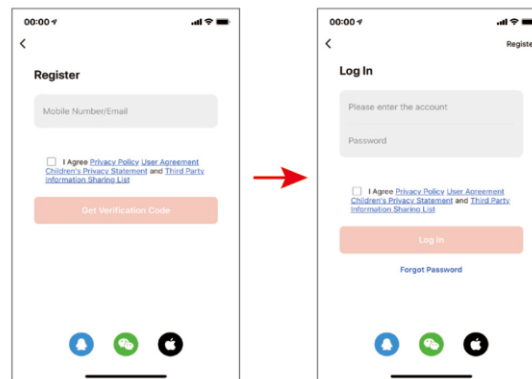


13、Optional Features—Tuya App Unlocked (support for optional products only)

Please scan the QR code below to download Tuya official App, or search “Tuya Smart” in the mobile application market to download App.



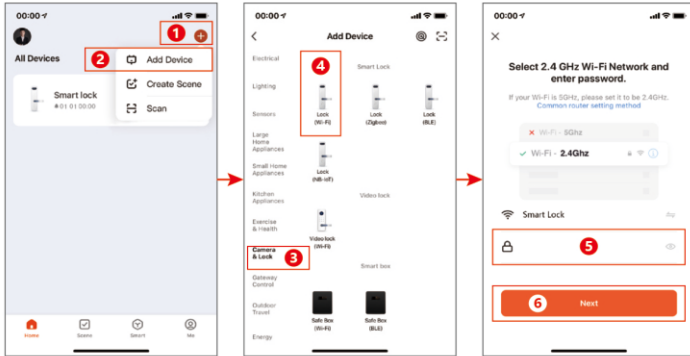
App Registration And Login



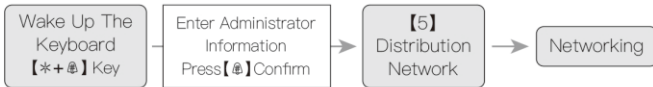
- (1) No account choose to register or register via SMS verification code to log in.
- (2) Click [Create New Account] , get the SMS verification code and set the password.
- (3) If you have an existing account, click [Login With Existing Account] to log in, the login method supports password, Captcha, and social account.

⚠ All data on the door lock will be erased.

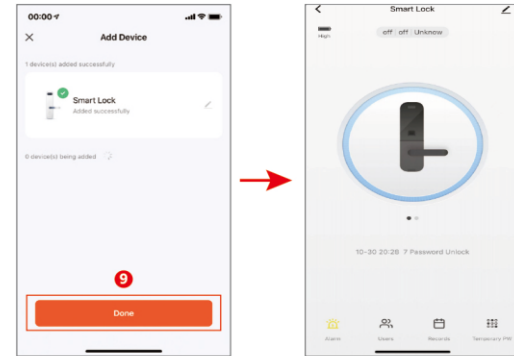
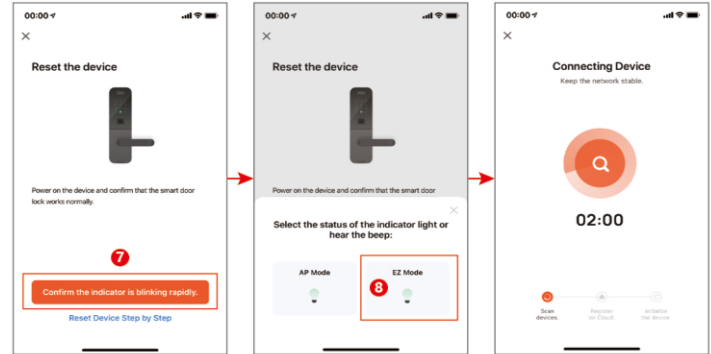
Add WiFi Door Lock



- (1) Tap **[+]** → **[Add Device]** icon on the home page of the App.
- (2) Enter the add device screen, select **[Camera/Lock]** → **[Door Lock (Wi-Fi)]**.
- (3) Enter WiFi login page, select WiFi account and password.



- (4) Touch the door lock screen to wake up the keypad, press **[*+@]** to enter the administrator information and then press **[@]** to confirm.
- (5) Enter the setup menu, press **[5]** Distribution Network.



- Before you can add a WiFi door lock, you must enter the administrator.
- ▲ Be sure to select a 2.4G network when connecting to the mobile app.
- After binding the App, please enter **[*]** to remotely request unlocking.

PRODUCT PARAMETERS

SN	Function	Content	Description
1	Unlocking Method	Fingerprint+ Password IC Card+Key Tuya App(Optional)	
2	Total Number Of Users	300 Groups	Includes administrators and regular users
3	Fingerprint	100 Groups	Repeat the fingerprint entry 5 times (Please try to enter from multiple angles)
4	Password	100 Groups	Enter your password twice, and press [#] confirm. (6-10 digits, both times must be the same!)
5	IC Card	100 Groups	Supports the addition of 13.56MHz IC cards
6	Dummy Password Length	20th	
7	Low Voltage Alarm	4.8±0.2V	When the voltage is lower than 4.8V, the red light blinks 5 times, prompting "the battery is low, please replace the battery", and there are still 100 times left to unlock the door, when it is lower than 4.5V, the door lock will not be able to unlock.
8	Quiescent Current	≤60uA	
9	Dynamic Current	≤220mA	
10	Supply Voltage	6.0±0.3V	New battery full charge voltage
11	Emergency Power Supply	5V (DC)	Micro USB power supply port
12	Operating Temperature	-25℃~+70℃	
13	Operating Humidity	40%~55%RH	No condensation
14	Voice-Guided Navigation	9-Country Audio Broadcasting	Chinese, English, Vietnamese, Russian, Korean Arabic, Portuguese, Spanish, Indonesian
15	Anti-Breaking Alarm	Support On/Off	Trigger continuous alarm for 45 seconds
16	False Alarm	Support	3 consecutive attempts within 5 minutes. will be locked for 3 minutes.

⚠ Matters Needing Attention

- When installing the door lock, make sure the wires are not pinched.
- Pay attention to the direction of the lock cylinder hole: the rotating parts of the lock body must be capable of flexible operation.
- Be sure to install the batteries after the door lock has been installed.
- Please choose good quality alkaline batteries and make sure all 4 batteries are brand new with the battery compartment cover on.
- This lock requires a key to unlock the door, which is kept in a safe place so that it can be used at any time.
- Replace the battery immediately when you hear the low voltage alarm.
- This lock is waterproof to IP43, Attention to routine maintenance.
- Please keep your fingers clean and dry when using it.
- WIFI optional products when the app connects, you must enter the administrator first, and be sure to select the 2.4G network.